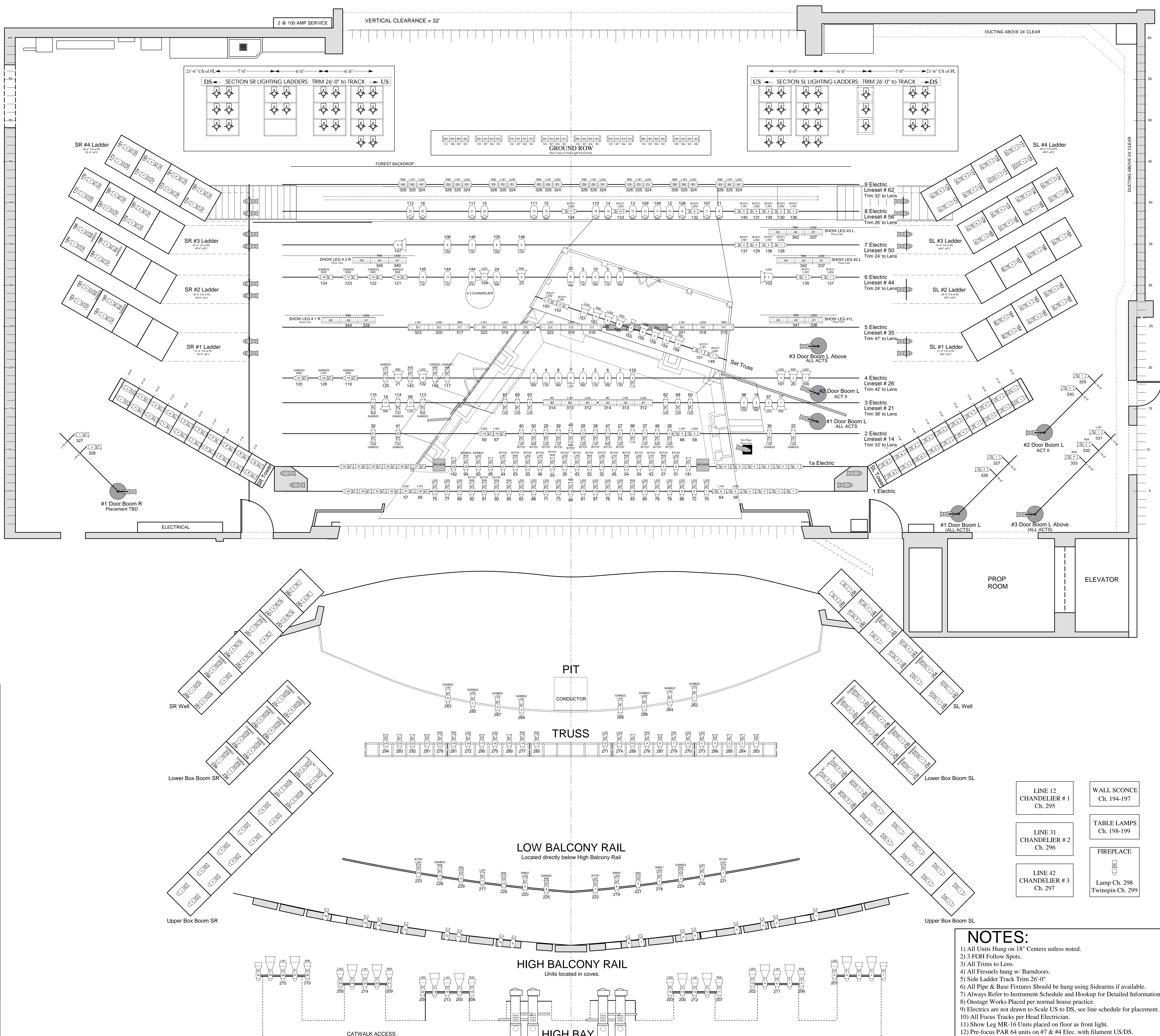


LINE	FPL	SHOW ITEMS
68A	49'0"	BACKWALL
69	45'0"	
67A	48'0"	
67	46'1"	
66	45'4"	
65	44'8"	
64	43'11"	FOREST DROP
63	43'3"	
62	41'8"	#9 ELECTRIC
61	40'9"	
60	40'3"	SNOW BAG
59	39'7"	SNOW BAG
58		
57		
56	38'2"	#8 ELECTRIC
55		
54	36'10"	#3 SHOW LEG
53		
52	35'8"	SNOW BAG
51	34'11"	SNOW BAG
50	34'2"	
49	33'5"	#7 ELECTRIC
48	32'11"	
47	32'3"	#2 SHOW LEGS
46	31'8"	
45	30'10"	
44	30'3"	#6 ELECTRIC
43	29'7"	
42	29'-00"	CHANDELIER
41	28'-01"	
40	27'7"	
39	26'11"	
38	26'3"	SHOW BORDER
37	25'5"	#1 SHOW LEGS
36	25'0"	
35	24'2"	#5 ELECTRIC
34	23'7"	
33	22'11"	
32	22'3"	#2 BLACK BORDER
31	21'-09"	#2 CHANDELIER ACT 2
30	21'0"	
29	20'3"	
28		
26A	17'7"	#4 ELECTRIC
25	17'4"	
24	16'10"	#2 STAGE RIGHT BLACK LEG
23	16'2"	ACT 3 1 BEDROOM BACKING
22	15'9"	
21	15'-00"	#3 ELECTRIC
20	14'3"	
19	13'8"	ACT 3 BEDROOM WALL
18	12'-11"	
17	12'5"	#1 BLACK BORDER
16	11'8"	
15	11'0"	#2 ELECTRIC
14	10'3"	
13	9'8"	CHANDELIER ACT 2
12	9'1"	#1 BLACK LEGS
11	7'9"	LIGHTING BRIDGE
10	7'0"	LIGHTING BRIDGE
9	6'6"	LIPSTAGE BRIDGE
8	5'10"	LIGHTING BRIDGE
7	5'0"	DOWNSTAGE BRIDGE
6	4'4"	#1 ELECTRIC
5	3'8"	BLACKOUT DROP
4	3'0"	STAGE LEFT TREE
3	2'5"	STAGE RIGHT TREE
2A	1'8"	HARD LEGS
2	1'0"	TEASER
1	0'3"	SETTING LINE



Instrument	Unit
Source 4 5kg	12
Source 4 10kg	18
Source 4 20kg	24
Source 4 30kg	30
Source 4 40kg	36
Source 4 50kg	42
Source 4 60kg	48
Source 4 70kg	54
Source 4 80kg	60
Source 4 90kg	66
Source 4 100kg	72
Source 4 110kg	78
Source 4 120kg	84
Source 4 130kg	90
Source 4 140kg	96
Source 4 150kg	102
Source 4 160kg	108
Source 4 170kg	114
Source 4 180kg	120
Source 4 190kg	126
Source 4 200kg	132
Source 4 210kg	138
Source 4 220kg	144
Source 4 230kg	150
Source 4 240kg	156
Source 4 250kg	162
Source 4 260kg	168
Source 4 270kg	174
Source 4 280kg	180
Source 4 290kg	186
Source 4 300kg	192
Source 4 310kg	198
Source 4 320kg	204
Source 4 330kg	210
Source 4 340kg	216
Source 4 350kg	222
Source 4 360kg	228
Source 4 370kg	234
Source 4 380kg	240
Source 4 390kg	246
Source 4 400kg	252
Source 4 410kg	258
Source 4 420kg	264
Source 4 430kg	270
Source 4 440kg	276
Source 4 450kg	282
Source 4 460kg	288
Source 4 470kg	294
Source 4 480kg	300
Source 4 490kg	306
Source 4 500kg	312
Source 4 510kg	318
Source 4 520kg	324
Source 4 530kg	330
Source 4 540kg	336
Source 4 550kg	342
Source 4 560kg	348
Source 4 570kg	354
Source 4 580kg	360
Source 4 590kg	366
Source 4 600kg	372
Source 4 610kg	378
Source 4 620kg	384
Source 4 630kg	390
Source 4 640kg	396
Source 4 650kg	402
Source 4 660kg	408
Source 4 670kg	414
Source 4 680kg	420
Source 4 690kg	426
Source 4 700kg	432
Source 4 710kg	438
Source 4 720kg	444
Source 4 730kg	450
Source 4 740kg	456
Source 4 750kg	462
Source 4 760kg	468
Source 4 770kg	474
Source 4 780kg	480
Source 4 790kg	486
Source 4 800kg	492
Source 4 810kg	498
Source 4 820kg	504
Source 4 830kg	510
Source 4 840kg	516
Source 4 850kg	522
Source 4 860kg	528
Source 4 870kg	534
Source 4 880kg	540
Source 4 890kg	546
Source 4 900kg	552
Source 4 910kg	558
Source 4 920kg	564
Source 4 930kg	570
Source 4 940kg	576
Source 4 950kg	582
Source 4 960kg	588
Source 4 970kg	594
Source 4 980kg	600
Source 4 990kg	606
Source 4 1000kg	612

NOTES:

- 1) All Units Hung on 18" Centers unless noted.
- 2) 3 FOH Follow Spots.
- 3) All Trims to Lens.
- 4) All Fresnels hung w/ Barndoors.
- 5) Side Ladder Track Trim 26'-0"
- 6) All Pipe & Base Fixtures Should be hung using Sidearms if available.
- 7) Always Refer to Instrument Schedule and Hookup for Detailed Information.
- 8) Onstage Works Placed per normal house practice.
- 9) Electrics are not drawn to Scale US to DS, see line schedule for placement.
- 10) All Focus Tracks per Head Electrician.
- 11) Show Leg MR-16 Units placed on floor as front light.
- 12) Pre-focus PAR 64 units on #7 & #4 Elec. with filament US/DS.
- 13) Pre-focus PAR 64 units on #6 Elec. with filament SL/SR.
- 14) Pre-focus PAR 64 units on #8 Elec. with filament US/DS for units 6-16 and SL/SR on other units.
- 15) Pre-focus Fresnels to Spot.

SAN DIEGO OPERA

LIGHTING DESIGN: MARIE BARRETT

Lighting Designer Signature

PRODUCTION: *Vanessa* by Samuel Barber

VENUE INFORMATION: **Civic Theatre**
San Diego Opera
1200 Third Avenue, Suite 1824
San Diego
California, 92101

DIRECTOR: **GARNETT BRUCE**

PRODUCTION BY:

This is a representation of design concepts only. Marie Barrett takes no responsibility and herewith disclaims liability for any injury resulting from the implementation of these concepts. All work indicated by this drawing must be done in compliance with all applicable federal, state and local fire, safety and electrical codes. The lighting designer and staff are responsible for visual design of the lighting and are not responsible for structural or electrical accidents resulting in injury or damage. All concepts, ideas, and design elements shown on this drawing and all other documentation or related materials are the property of Marie Barrett and may only be used for this production. The resultant design may not be reproduced without written approval by Marie Barrett.

DIRECTOR OF PRODUCTION: **RON ALLEN**

PRODUCTION MANAGER: **JOAN FOSTER**

PRODUCTION STAGE MANAGER: **MARY Y. PETERS**

SCENE DESIGN: **MICHAEL YEARGAN**

PRODUCTION CARPENTER: **JOHN DAVID PETERS**

PRODUCTION ELECTRICIAN: **J. ERIC KEEL**

FILE NAME: Vanessa Light Plot 2005

Drawn By: chad R. jung
chadol1@yahoo.com
817-291-5849

DATE OF DRAWING: 3-5-05
Updated 3-15-05

DRAWING: **Light Plot**

SCALE: 1/4" = 1'-0"

SHEET: **1 OF 1**